

Heavy Duty Clamps HD 500 and HD 1501

Gives 'strength' to your installation

- Easy fixing
- High safe working load
- For indoor and outdoor use



BIS Heavy Duty Clamps

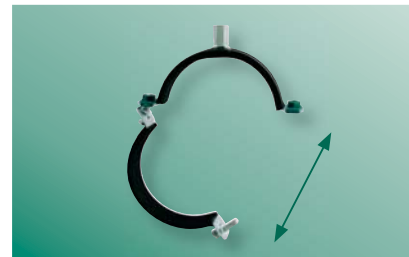
Easy fixing



Captive locking nut and screw
The nut and locking screw stay captive because of the plastic nut holder and anti-loss washer.*



No sharp edges or corners
The HD clamp is a straightforward assembly, well-finished with no sharp edges or corners.



Wide opening
There is sufficient space between both clamp halves to place the pipe, meaning only one locking screw needs to be unscrewed.

High safe working load



Robust and certified
Due to the CO₂ welded connection nut, the solid locking and the steel quality, the HD Clamp is suitable for heavier loads. Furthermore, the clamps have been performance tested in a fire situation.

For indoor and outdoor use



Optimal protection
Suitable for corrosive environments (C1-C4 in accordance with ISO 12944-2). All applied surface treatments effortlessly withstand a salt spray test of at least 1000 hours (max. 5% red rust) according to ISO 9227. **



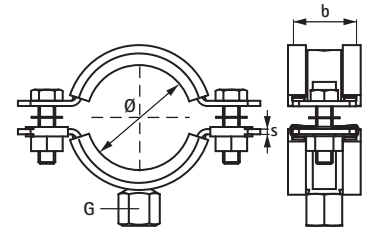
* Up to and including 5": locking nut is captive, hidden in plastic holder.

** The FAQs and installation tips can be found on our website www.walraven.com/int

BIS HD 1501 with EPDM lining



- Material: steel 1.0332 according to EN 10111, noise insulating lining made of EPDM rubber
- Surface Treatment: product is part of the BIS UltraProtect® 1000 system
- Noise insulation according to DIN 4109
- Temperature range:
 - -10° up to +120 °C (continuously)
 - -40° up to +125 °C (short time)



Pipe Ø			b x s	Fa,z	Connection nut (G)				
(mm)	(")	(DN)			(mm)	(N)	M8/M10	M10/M12	M16
15 - 19	3/8	10	30 x 2,5	1.500	3313 8 019	-	-	-	3317 8 019
19 - 23	1/2	15	30 x 2,5	1.500	3313 8 023	-	-	-	3317 8 023
25 - 29	3/4	20	30 x 2,5	1.500	3313 8 029	-	-	-	3317 8 029
30 - 35	1	25	30 x 2,5	1.500	3313 8 035	-	-	-	3317 8 035
40 - 45	1¼	32	30 x 2,5	1.500	3313 8 045	-	-	-	3317 8 045
46 - 51	1½	40	30 x 2,5	1.500	3313 8 051	-	-	-	3317 8 051
53 - 59	-	-	30 x 2,5	1.500	3313 8 059	-	-	-	3317 8 059
59 - 64	2	50	30 x 2,5	1.500	3313 8 064	-	-	-	3317 8 064
65 - 71	-	-	30 x 3,0	2.300	-	3314 8 071	-	-	3317 8 071
72 - 78	2½	65	30 x 3,0	2.300	-	3314 8 078	-	-	3317 8 078
79 - 85	-	-	30 x 3,0	2.300	-	3314 8 085	-	-	3317 8 085
86 - 92	3	80	30 x 3,0	2.300	-	3314 8 092	-	-	3317 8 092
101 - 109	-	-	30 x 3,0	2.300	-	3314 8 109	-	-	3317 8 109
108 - 116	4	100	30 x 3,0	2.300	-	3314 8 116	-	-	3317 8 116
125 - 133	-	-	30 x 3,0	2.300	-	3314 8 133	-	-	3317 8 133
132 - 140	5	125	30 x 3,0	2.300	-	3314 8 140	-	-	3317 8 140
159 - 169	6	150	38 x 4,0	3.800	-	3314 8 169	3316 8 169	-	3317 8 169
178 - 188	-	-	38 x 4,0	3.800	-	3314 8 188	3316 8 188	-	3317 8 188
194 - 204	-	-	38 x 4,0	3.800	-	3314 8 204	3316 8 204	-	3317 8 204
203 - 213	-	-	38 x 4,0	3.800	-	3314 8 213	3316 8 213	-	3317 8 213
217 - 227	8	200	38 x 4,0	3.800	-	3314 8 227	3316 8 227	-	3317 8 227
240 - 250	-	-	38 x 4,0	3.800	-	-	3316 8 250	-	3317 8 250
265 - 275	10	250	48 x 5,0	9.200	-	-	3316 8 275	-	3317 8 275
315 - 325	12	-	48 x 5,0	9.200	-	-	3316 8 325	-	3317 8 325
354 - 364	14	350	48 x 5,0	9.200	-	-	3316 8 364	-	3317 8 364
398 - 408	16	400	48 x 5,0	9.200	-	-	3316 8 408	-	3317 8 408
448 - 458	18	450	48 x 5,0	9.200	-	-	3316 8 458	-	3317 8 458
499 - 509	20	500	48 x 5,0	9.200	-	-	3316 8 509	-	3317 8 509

All articles are tested according to RAL-GZ 655/B and Ø 15 - 227 also tested according to RAL-GZ 656

RAL

The max. allowed load (Fa,z) is calculated using specific statistical methods related to the breaking load, taking into account a deflection of 1.5 mm or 2% of the maximum nominal clamp diameter. According to the RAL requirements, the test results from above mentioned RAL certified articles are monitored by an independent test institute.



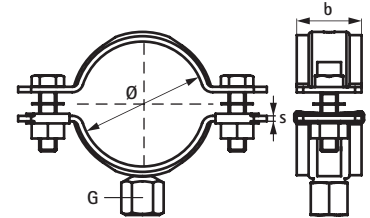
BIS HD 1501: Cert.Nr. 2011-12A
 BIS HD 500: Cert.Nr. 2011-13A

Cert.Nr. 2011-14
 Cert.Nr. 2011-05

BIS HD 500



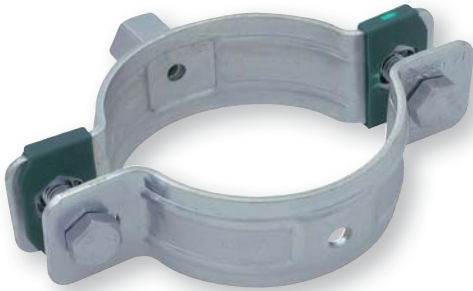
- Material: steel 1.0332 according to EN 10111
- Surface Treatment: product is part of the BIS UltraProtect® 1000 system



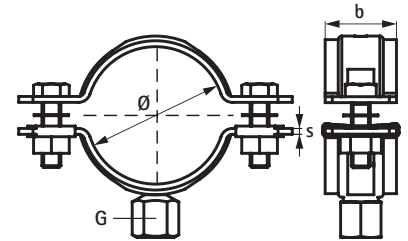
Pipe Ø			b x s	Fa,z	Connection nut (G)			
(mm)	(")	(DN)			(mm)	(N)	M8/M10	M10/M12
15 - 19	3/8	10	30 x 2,5	2.100	3303 8 019	-	-	3307 8 019
19 - 23	1/2	15	30 x 2,5	2.100	3303 8 023	-	-	3307 8 023
25 - 30	3/4	20	30 x 2,5	2.100	3303 8 030	-	-	3307 8 030
31 - 36	1	25	30 x 2,5	2.100	3303 8 036	-	-	3307 8 036
37 - 42	-	-	30 x 2,5	2.100	3303 8 042	-	-	3307 8 042
40 - 45	1¼	32	30 x 2,5	2.100	3303 8 045	-	-	3307 8 045
47 - 52	1½	40	30 x 2,5	2.100	3303 8 052	-	-	3307 8 052
53 - 58	-	-	30 x 2,5	2.100	3303 8 058	-	-	3307 8 058
59 - 65	2	50	30 x 2,5	2.100	3303 8 065	-	-	3307 8 065
66 - 71	-	-	30 x 2,5	2.100	3303 8 071	-	-	3307 8 071
72 - 78	2½	65	30 x 3,0	4.000	-	3304 8 078	-	3307 8 078
79 - 85	-	-	30 x 3,0	4.000	-	3304 8 085	-	3307 8 085
86 - 92	3	80	30 x 3,0	4.000	-	3304 8 092	-	3307 8 092
98 - 106	-	-	30 x 3,0	4.000	-	3304 8 106	-	3307 8 106
108 - 116	4	100	30 x 3,0	4.000	-	3304 8 116	-	3307 8 116
116 - 123	-	-	30 x 3,0	4.000	-	3304 8 123	-	-
125 - 133	-	-	30 x 3,0	4.000	-	3304 8 133	-	3307 8 133
132 - 140	5	125	30 x 3,0	4.000	-	3304 8 140	-	3307 8 140
148 - 154	-	-	30 x 3,0	4.000	-	3304 8 154	-	3307 8 154
159 - 169	6	150	38 x 4,0	8.200	-	3304 8 169	3306 8 169	3307 8 169
173 - 183	-	-	38 x 4,0	8.200	-	3304 8 183	3306 8 183	3307 8 183
192 - 202	-	-	38 x 4,0	8.200	-	3304 8 202	3306 8 202	3307 8 202
208 - 219	-	-	38 x 4,0	8.200	-	3304 8 219	-	3307 8 219
217 - 227	8	200	38 x 4,0	8.200	-	3304 8 227	3306 8 227	3307 8 227
229 - 241	-	-	38 x 4,0	8.200	-	-	3306 8 241	
244 - 254	-	-	38 x 4,0	8.200	-	-	3306 8 254	3307 8 254
254 - 264	-	-	38 x 4,0	8.200	-	-	3306 8 264	
267 - 279	10	250	38 x 4,0	8.200	-	-	3306 8 279	3307 8 279
279 - 289	-	-	48 x 5,0	12.000	-	-	3306 8 289	3307 8 289
292 - 302	-	-	48 x 5,0	12.000	-	-	3306 8 302	
315 - 325	12	300	48 x 5,0	12.000	-	-	3306 8 325	3307 8 325
350 - 360	14	350	48 x 5,0	12.000	-	-	3306 8 360	3307 8 360
364 - 374	-	-	48 x 5,0	12.000	-	-	3306 8 374	
379 - 389	-	-	48 x 5,0	12.000	-	-	3306 8 389	
398 - 408	16	400	48 x 5,0	12.000	-	-	3306 8 408	3307 8 408
408 - 418	-	-	48 x 5,0	12.000	-	-	3306 8 418	
424 - 436	-	-	48 x 5,0	12.000	-	-	3306 8 436	3307 8 436
448 - 458	18	450	48 x 5,0	12.000	-	-	3306 8 458	3307 8 458
499 - 509	20	500	48 x 5,0	12.000	-	-	3306 8 509	3307 3 509
554 - 564	-	-	48 x 5,0	12.000	-	-	-	3307 8 564

All articles are tested according to RAL-GZ 655/B and Ø 15 - 227 also tested according to RAL-GZ 656

BIS HD 500 Sprinkler Clamps



- Material: steel 1.0332 according to EN 10111
- Zinc plated
- With VdS approval - certificate number G 4060019



Pipe Ø			b x s	Fa,z	Connection nut (G)			
(mm)	(")	(DN)			M8	M10	M12	M16
25 - 30	3/4	20	30 x 2,5	2.700	450 3 027	-	-	-
31 - 36	1	25	30 x 2,5	2.700	450 3 033	-	-	-
40 - 45	1 1/4	32	30 x 2,5	2.700	450 3 042	-	-	-
47 - 52	1 1/2	40	30 x 2,5	2.700	450 3 048	-	-	-
59 - 65	2	50	30 x 2,5	2.700	450 3 060	-	-	-
72 - 78	2 1/2	65	30 x 3,0	5.000	-	450 3 076	-	-
86 - 92	3	80	30 x 3,0	5.000	-	450 3 089	-	-
108 - 116	4	100	30 x 3,0	5.000	-	450 3 114	-	-
132 - 140	5	125	30 x 3,0	5.000	-	-	450 3 139	-
159 - 169	6	150	38 x 4,0	5.800	-	-	450 3 168	-
208 - 219	8	200	38 x 4,0	5.800	-	-	-	450 3 219

Accessories

Thread Adaptor

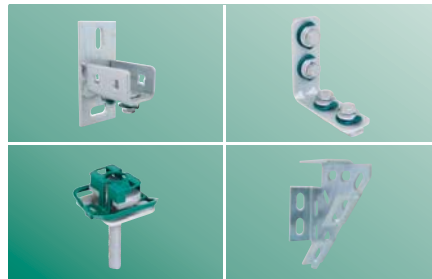
Within our range of Thread Adaptors it is possible to alter the thread size of the BIS HD Clamps. (# 647 3 XXX)
 (Use of Thread Adaptor not advised for the Sprinkler version of the HD Clamp).



The right combination

BIS RapidStrut®

For all medium and heavy rail applications.



Fast and easy

The accessories are pre-assembled and delivered 'ready-to-use' to the building site. The plastic spring allows the slide nut to be fixed easily into the rail. The assembly is retained in place before final tightening.

Complete system

The BIS RapidStrut® Fixing System offers an extensive choice for rail profiles and cantilever arms. A broad range of accessories are available including: slide nuts, T-bolt assemblies, ball swivel hangers and various rail connectors.

BIS RapidStrut® Fixing Rail DS 5

BIS RapidStrut® Fixing Rail DS 5 has a unique hole pattern, allowing BIS RapidStrut® accessories to be mounted quickly on both sides of the rail!

BIS UltraProtect® 1000 Range

A selection from the range:



BIS RapidStrut® DS 5 Fixing Rail



BIS RapidStrut® Rail Connectors G2



BIS RapidStrut® Slide Nuts G2



BIS RapidStrut® Rail Connectors 135° G2



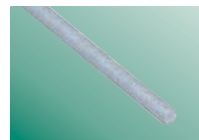
BIS RapidStrut® Cross Connectors G2



BIS RapidStrut® Cantilever Arms



BIS Yeti® Support System



BIS Threaded Rods



For complete range and more info:

www.bis-ultraprotect.com

The Netherlands

Walraven B.V.
Postbus 15
3640 AA Mijdrecht (NL)
Tel. +31 (0)297 23 30 00
Fax +31 (0)297 23 30 99
info@walraven.com

United Kingdom Ireland

Walraven Ltd.
Thorpe Way, Banbury (GB)
Oxon, OX16 4UU
Tel. +44 (0)1295 75 34 00
Fax +44 (0)1295 75 34 28
sales.banbury@walraven.com

Germany

Austria – Switzerland – South East Europe

Walraven GmbH
Postfach 125128
95425 Bayreuth (DE)
Tel. +49 (0)921 75 60 0
Fax +49 (0)921 75 60 111
info@walraven.de

Other countries

Walraven International
P.O. Box 15
3640 AA Mijdrecht (NL)
Tel. +31 (0)297 23 30 00
Fax +31 (0)297 23 30 99
export@walraven.com

Walraven Group

Mijdrecht (NL) · Tienen (BE) · Bayreuth (DE) · Banbury (GB) · Malmö (SE) · Grenoble (FR) · Madrid (ES) · Barcelona (ES) · Kraków (PL) · Mladá Boleslav (CZ) · Moscow (RU) · Kyiv (UA) · Detroit (US) · Shanghai (CN) · Dubai (AE) · Budapest (HU)

