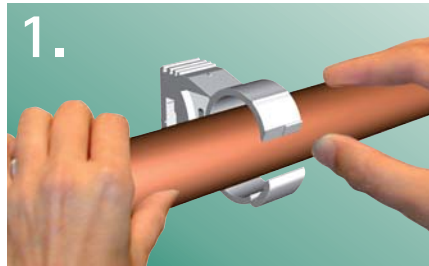


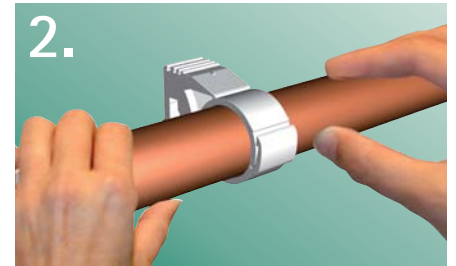
BIS starQuick®

Benefits

- Self-closing clamp: quick and easy
- For all pipe types in Ø 10 - 65 mm
- For sanitary, heating and electrotechnical installations
- Plastic clamps and accessories: corrosion free
- Cunning range of accessories
- Well-rounded design



1. Push pipe into clamp

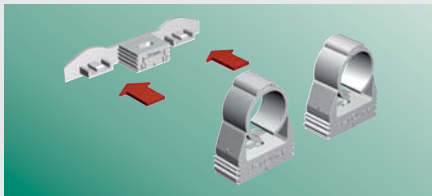


2. Done!

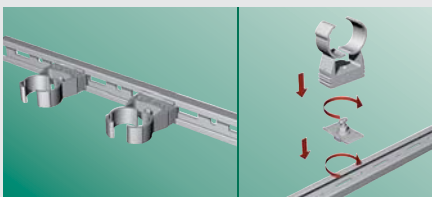
Fixing of two or more pipes



1. Tacking

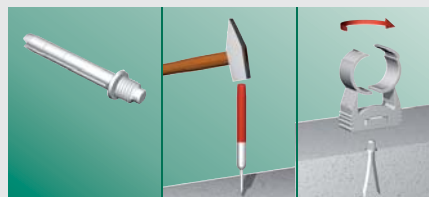
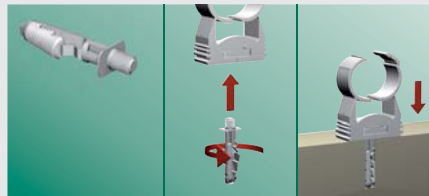
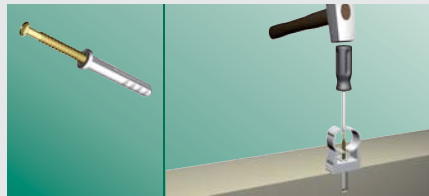


2. Duo-wall Plate

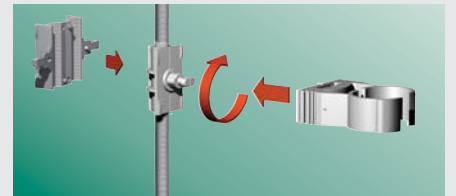


3. Fixing Rail

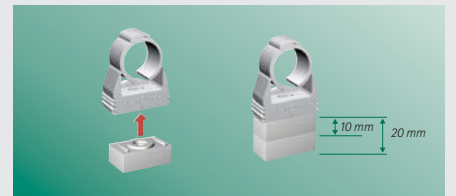
Fixing to wall or floor



Fixing to a threaded rod



Fixing with a distance



Fixing to metal rail



For BIS RapidRail®



Universal Rail Adaptor for BIS RapidRail® and BIS RapidStrut®



For BIS RapidStrut®



A cunning range

BIS starQuick® Clamps



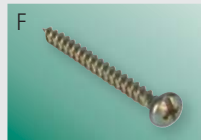
Also available in copper colour



Grey	Grey with M6 nut	White	Type	D (mm)	D (")	D (DN)	Fa,z (N)	Fb,z (N)	Box	Outer Box
085 4 010	085 4 610	085 5 010	SQ-10	10 - 12	1/8	6	170	500	100	1.200
085 4 012	085 4 612	085 5 012	SQ-12	12 - 14	1/4	8	180	550	100	1.200
085 4 015	085 4 615	085 5 015	SQ-15	14 - 16	-	-	200	600	100	1.200
085 4 018	085 4 618	085 5 018	SQ-17	16 - 20	3/8	10	230	700	100	800
085 4 022	085 4 622	085 5 022	SQ-20	20 - 23	1/2	15	270	800	50	600
085 4 028	085 4 628	085 5 028	SQ-25	24 - 28	3/4	20	280	850	50	600
085 4 031	085 4 631	085 5 031	SQ-28	28 - 32	-	-	300	900	50	400
085 4 035	085 4 635	085 5 035	SQ-32	32 - 35	1	25	330	1.000	50	400
085 4 038	085 4 638	085 5 038	SQ-36	35 - 40	-	-	370	1.100	25	300
085 4 042	085 4 642	085 5 042	SQ-40	40 - 44	1 1/4	32	400	1.200	25	200
085 4 050	085 4 650	085 5 050	SQ-47	44 - 50	-	-	430	1.300	25	200
085 4 054	085 4 654	085 5 054	SQ-51	48 - 55	1 1/2	40	470	1.400	15	180
085 4 063	-	085 5 063	SQ-59	59 - 65	2	50	500	1.500	15	180

Fa = maximum allowed load. Fb = breaking load.

BIS starQuick® Accessories



	Part No.	Product	Dimension	Box	Outer Box
A	085 4 000	Duo-wall Plate (grey)	50 mm	100	1.200
	085 5 000	Duo-wall Plate (white)	50 mm	100	1.200
B	085 4 300	Duo-wall Plate (grey)*	50 mm	50	600
C	085 4 356	Threaded Rod Adaptor	M6	100	1.200
	085 4 358	Threaded Rod Adaptor	M8	100	1.200
D	085 4 510	Distance Block	10 mm	25	250
E	085 4 301	Hammer-in Screw	Ø 6 x 40 mm	25	250
F	085 4 302	Sprint Screw	Ø 6 x 45 mm	100	1.000
G	085 4 316	Rail	150 mm	50	400
	085 4 325	Rail	1 m	25	-
H	085 4 313	Rail Adaptor	BIS starQuick® Rail	20	200
I	085 4 314	Rail Plug	Ø 6 x 30 mm	50	500
J	085 4 331	Strut Adaptor	Strut-rail	100	800
K	085 4 006	Fixing Nut (grey)	M6	100	1.000
	085 5 006	Fixing Nut (white)	M6	100	1.000
	085 4 007	Fixing Nut (grey)	M7B	100	1.000
	085 4 307	Fixing Nut (grey)	M7F	100	1.000
	085 4 308	Fixing Nut (grey)	M8	100	1.000
L	610 0 063	Hammer-in Plug**	M6	50	500
M	610 1 063	Push Plug	M6	50	500
N	085 4 338	Hammerfix M8	WMO, 1, 15, 2, 30, 35	50	600
O	085 4 348	Hammerfix M8	Strut-rail	25	300
P	085 4 332	Universal Rail Adaptor	WMO, 1, 15, 2, 30, 35 + Strut	50	600

* With hammer-in screw ** For aerated concrete